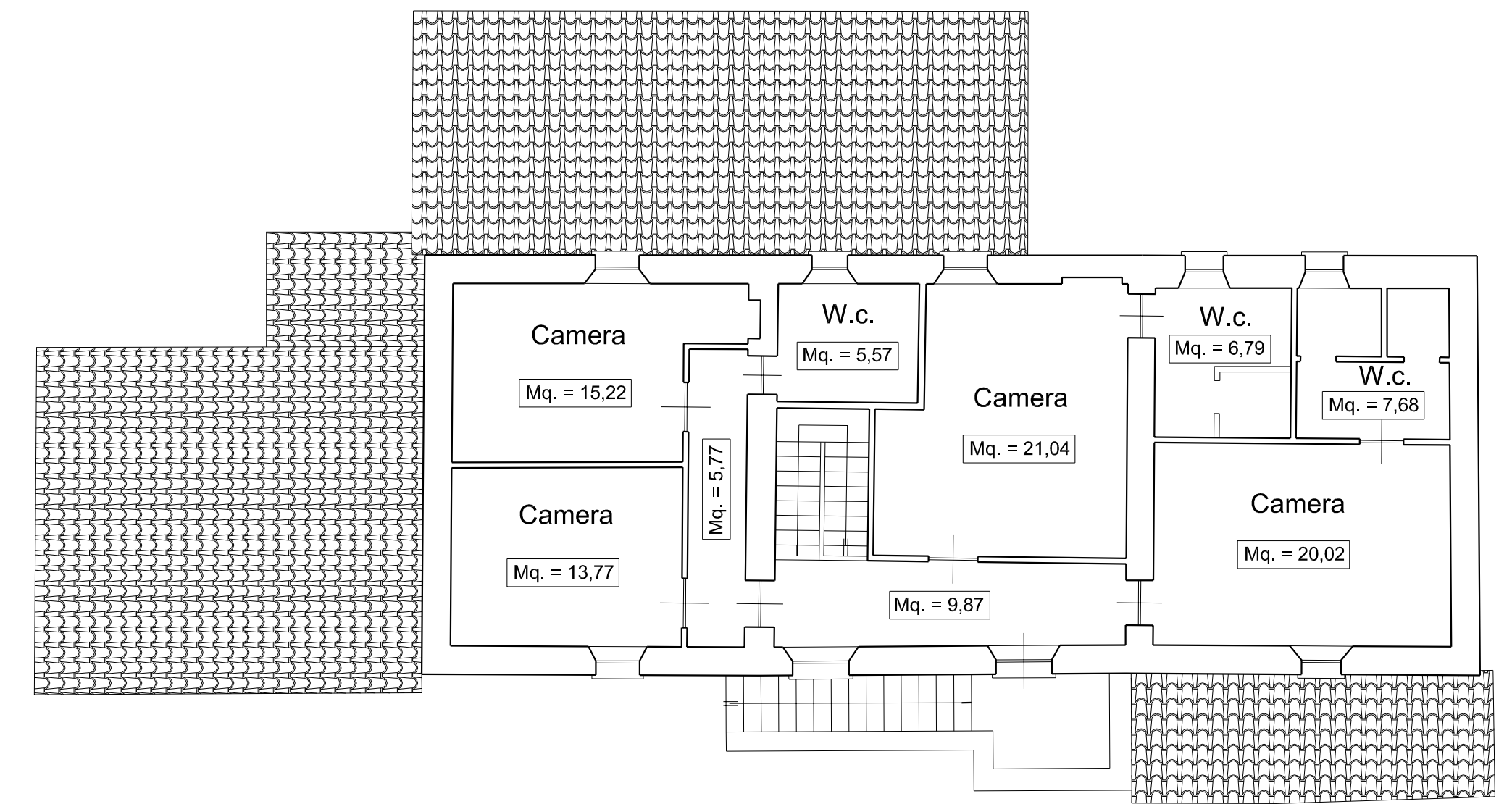
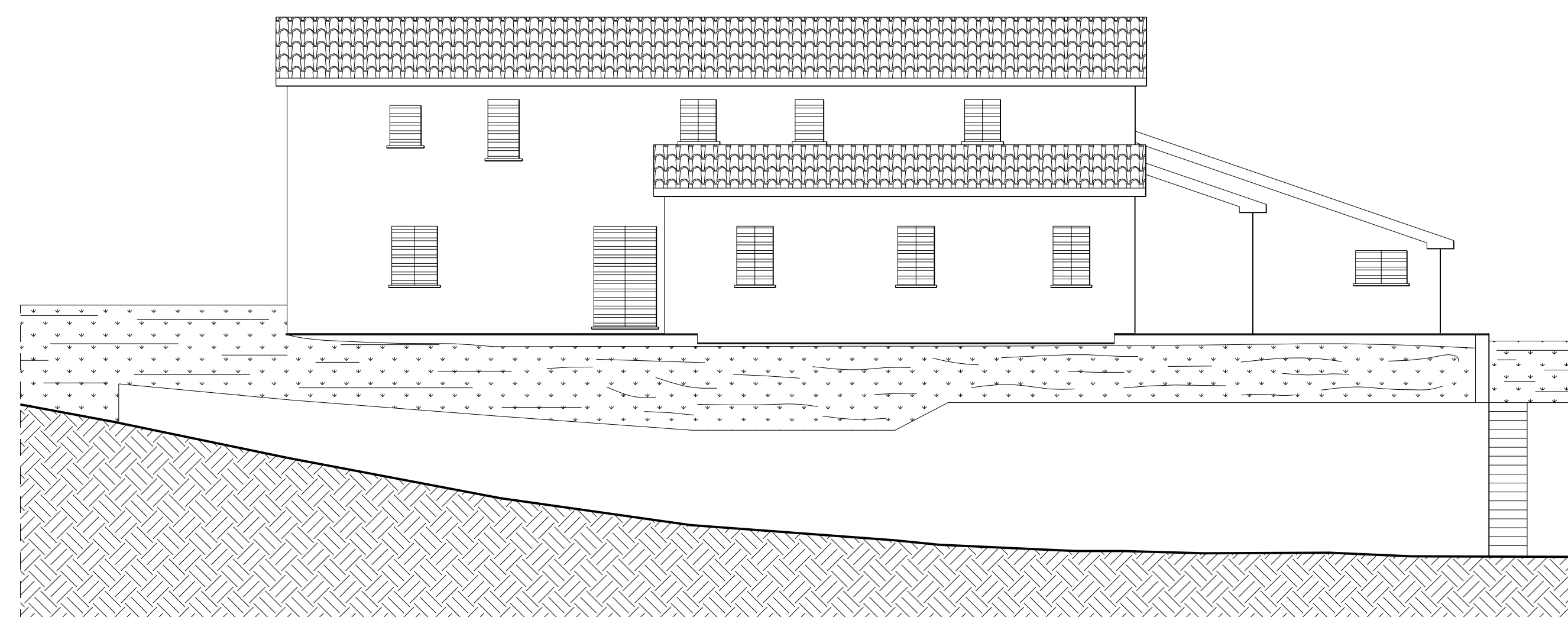


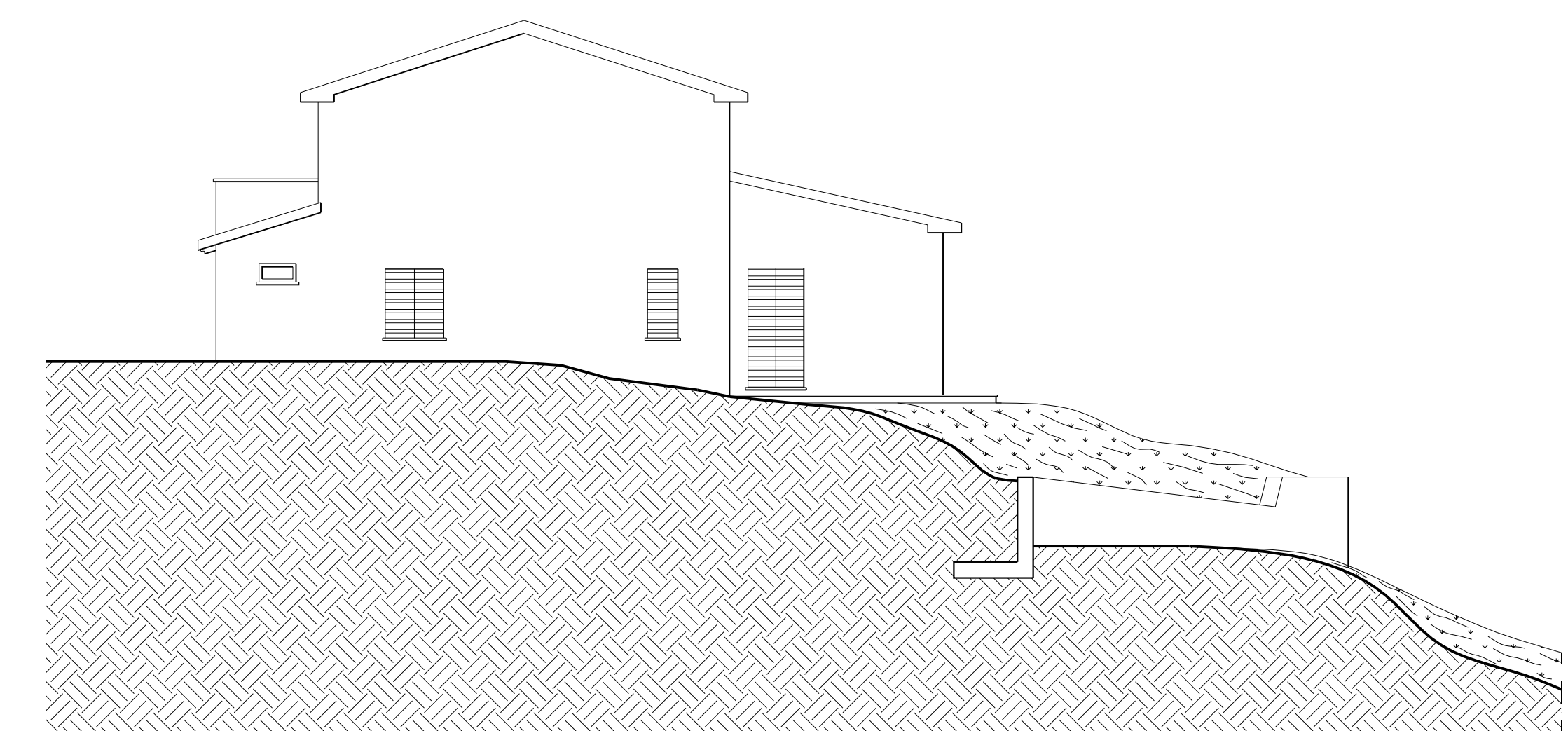
PIANTA PIANO TERRA



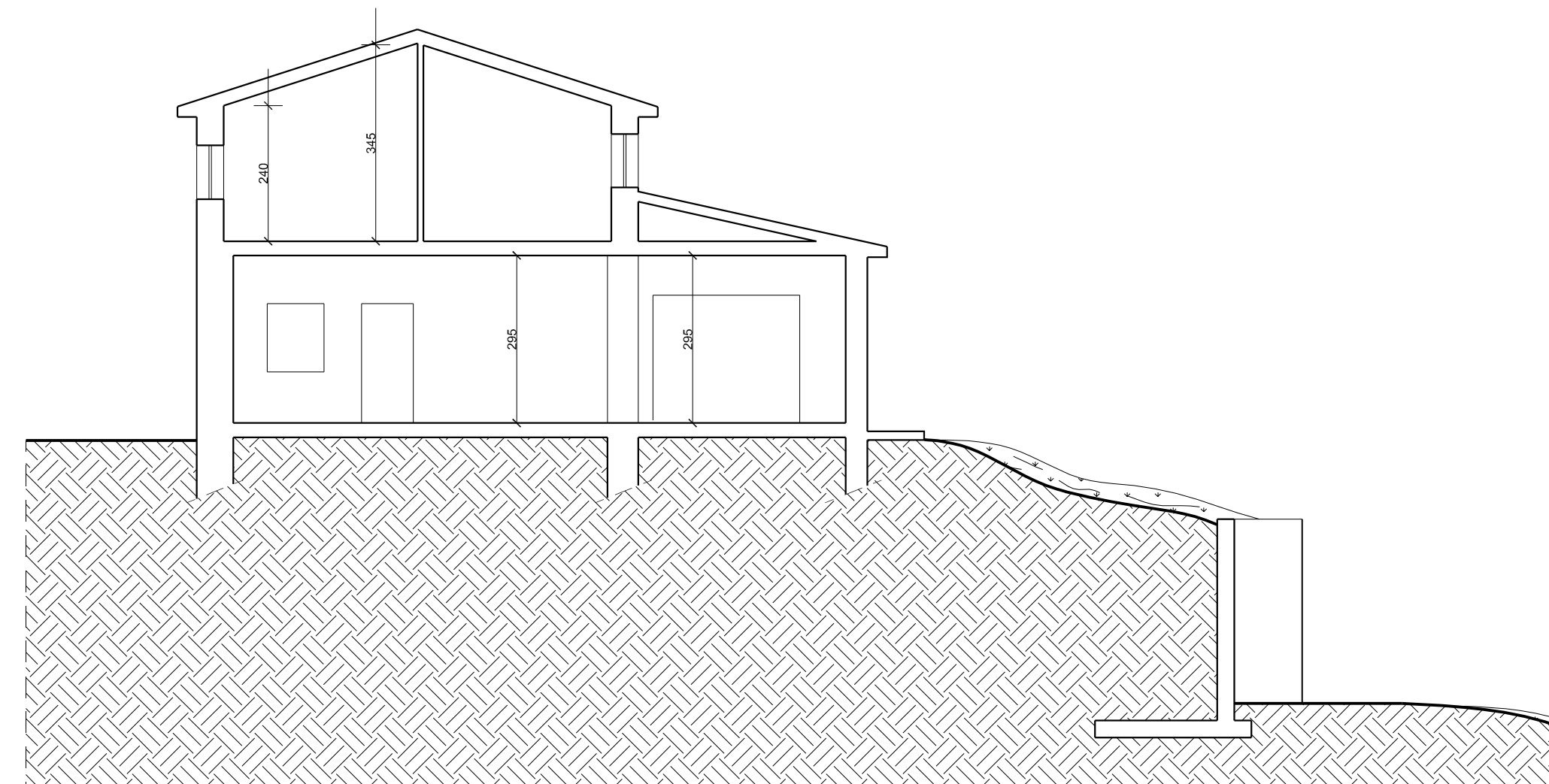
PIANTA PIANO PRIMO



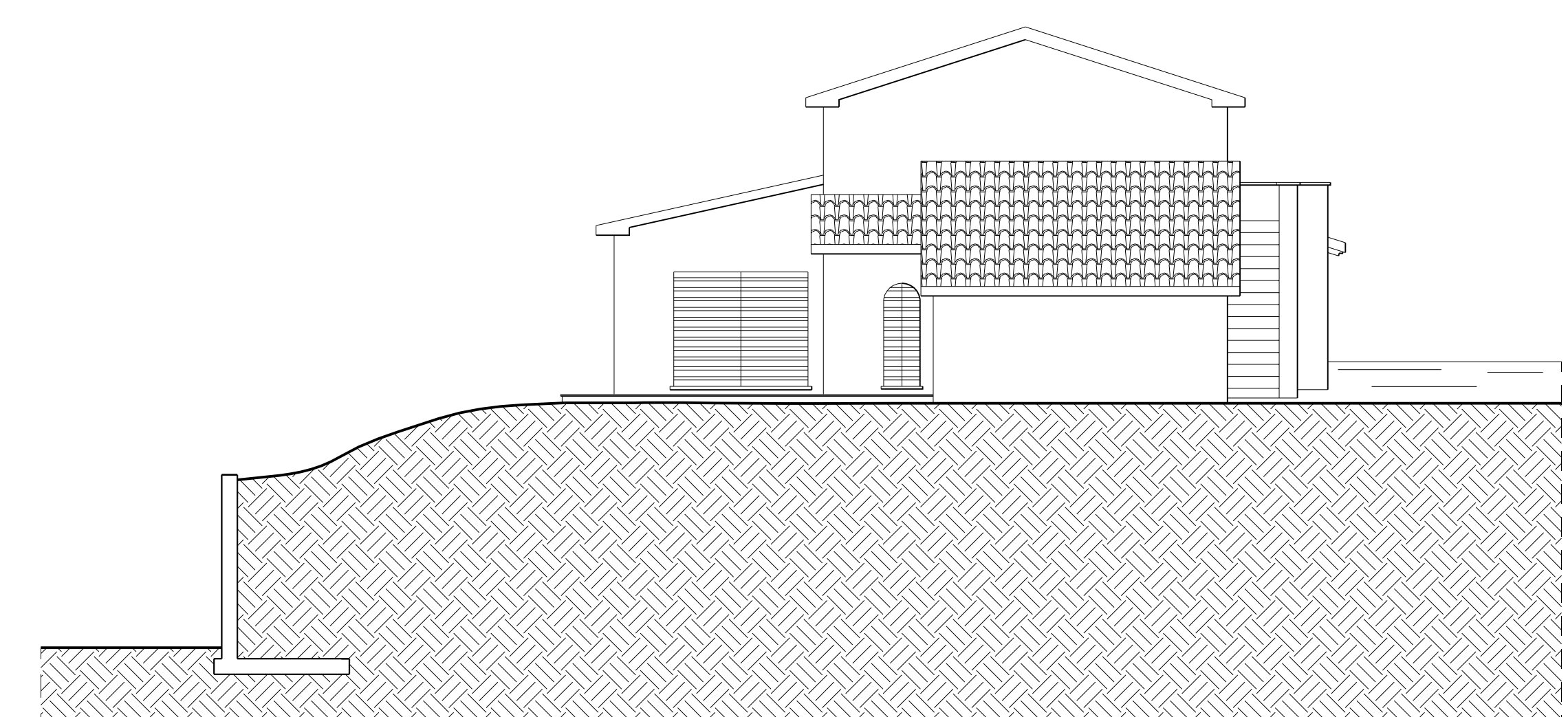
PROSPETTO 1



PROSPETTO 2



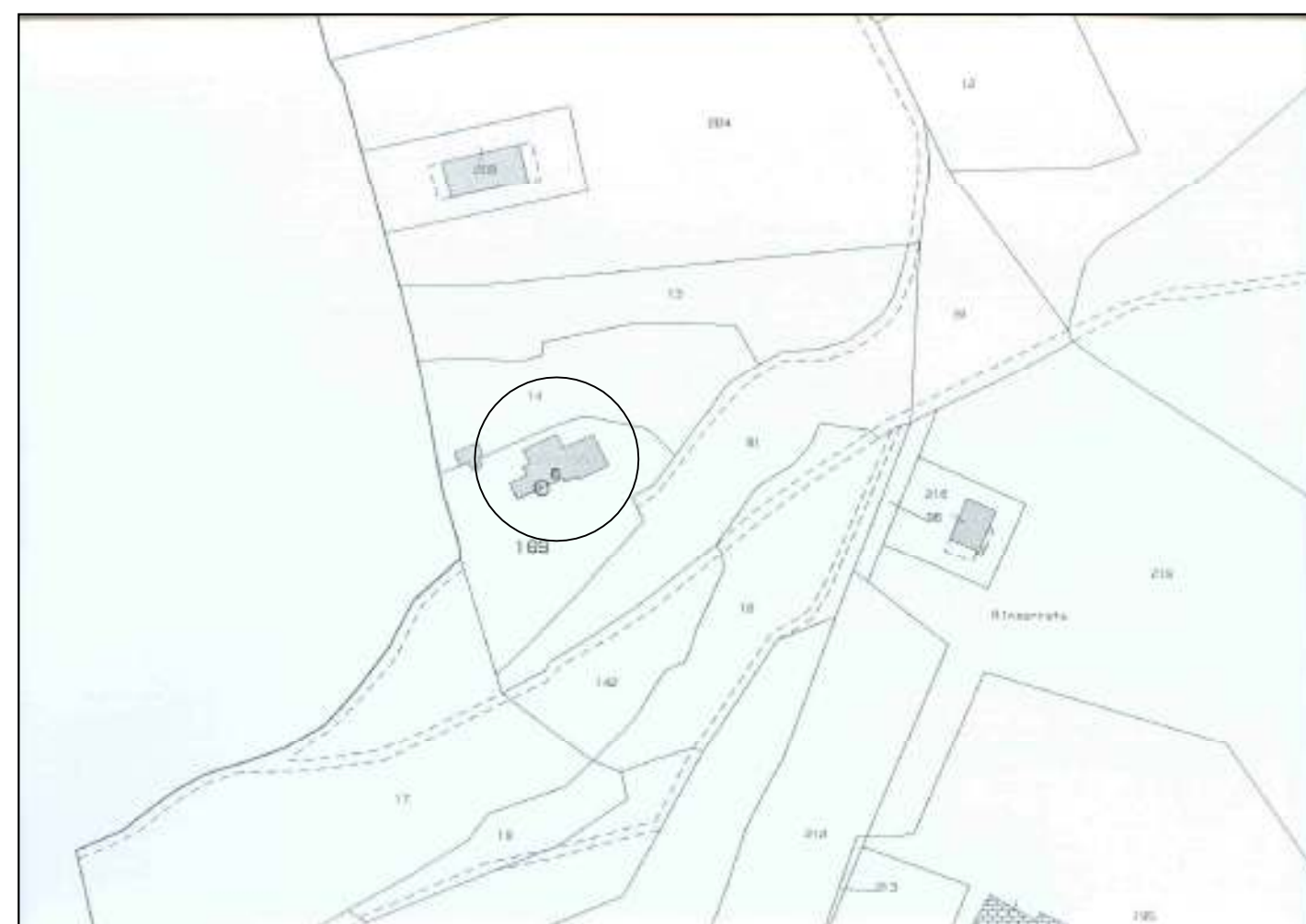
SEZIONE



PROSPETTO 3

**ESTRATTO CATASTALE**

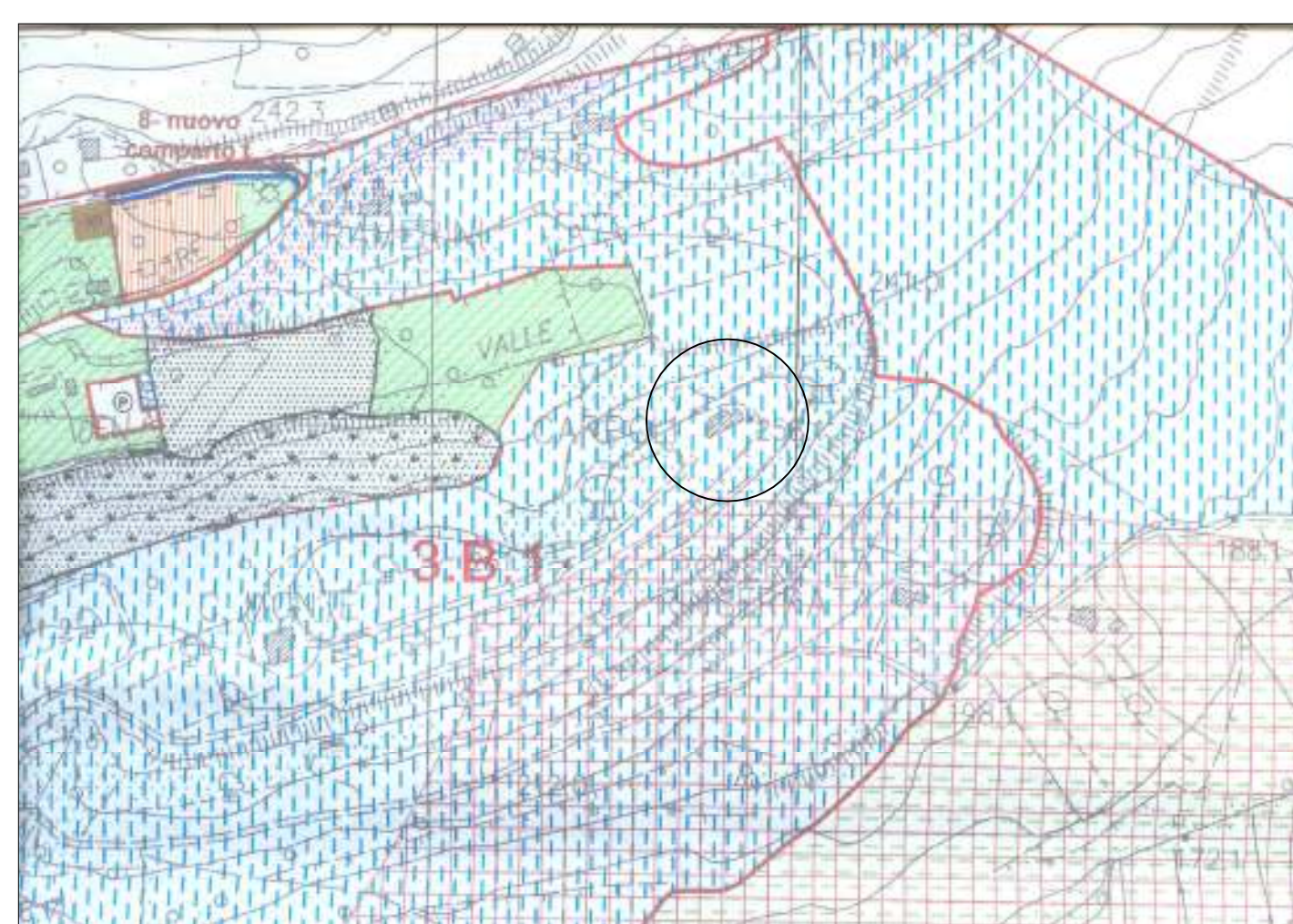
SCALA 1 : 2000



Foglio 8 Mappale 169

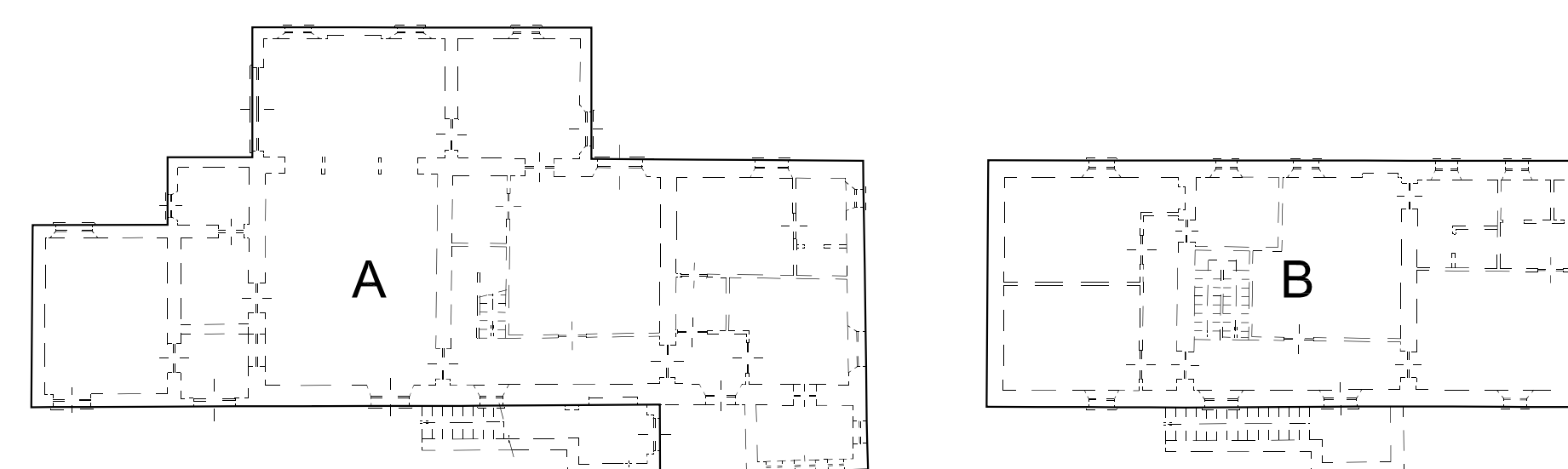
**ESTRATTO REGOLAMENTO URBANISTICO**

SCALA 1 : 5000



Zona Agricola di Fascia "b"

**CALCOLO SUPERFICI LORDE**



PIANTA PIANO TERRA

PIANTA PIANO PRIMO

Superficie massima ampliabile

A = mq. 246,29

B = mq. 147,57

Tot. mq. = mq. 393,86

mq. 393,86 x 20 % = 78,77

Essendo la superficie lorda esistente superiore, a quanto previsto dalla vigente normativa, l'ampliamento massimo dovrà essere minore e/o uguale a **mq. 70,00**